

## Registration as Epidemiologist

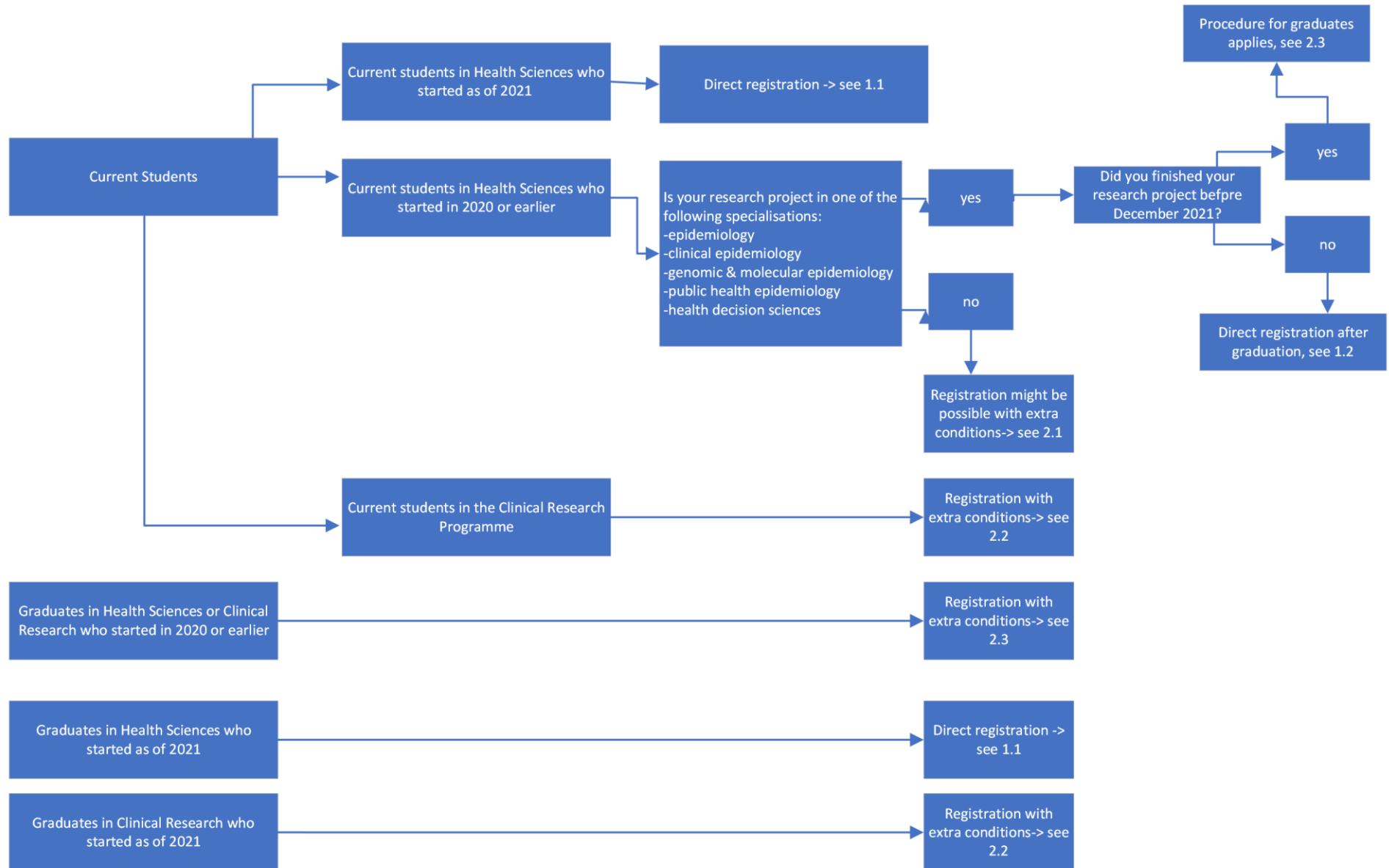
The NIHES Master programmes aim to train students in epidemiologic research. If they wish to do so, our graduates can in most cases apply for registration as epidemiologist with the Dutch Society of Epidemiology (Vereniging voor Epidemiologie, VvE; [www.epidemiologie.nl](http://www.epidemiologie.nl)). You can visit their website for more information about the registration process.

One of the VvE prerequisites for being registered as epidemiologist is that the research supervisor during the Master programme is a skilled epidemiologist. This is not automatically part of all NIHES programmes, as mentioned below. Students also need to fulfil the VvE requirement of pre-training with sufficient content concerning disease and health to be entitled to registration as Epidemiologist. This requirement is not covered by the NIHES programmes, details can be found on the VvE website.

In this document, the procedure to become a registered Epidemiologist is described for our students and alumni.

This procedure is supervised by our recognized epidemiology trainers Prof. A. Burdorf (Department of Public Health) or Prof. M.A. Ikram (Department of Epidemiology).

# Registration as Epidemiologist A



## Registration as Epidemiologist A

### 1. Direct registration (provided you fulfil the VvE requirement of pre-training with sufficient content concerning disease and health)

- 1.1 Current students starting **as of 2021-2022 or later** in one of the Health Sciences programmes (70 or 120 EC) can apply for registration directly with the VvE upon graduation. We will make sure that all students starting as of 2021-2022 will have a suitable supervisor. If the first supervisor is not a skilled epidemiologist, a second researcher who is, will be assigned to review the design and methodology described in the research proposal and answer questions. This second person will not be directly involved in the research project and will also act as second assessor for the Master thesis.
- 1.2 Current students who started **as of 2020 or earlier** in the Health Sciences programmes (70 or 120 EC) who are still working on their research project in the specialisations:
  - Epidemiology
  - Clinical Epidemiology
  - Genomic & Molecular Epidemiology
  - Public Health Epidemiology
  - Health Decision Sciencescan apply directly with the VvE upon graduation. These students will be assigned a second assessor who is a skilled epidemiologist if their supervisor is not. This will be arranged by NIHES, no action from the student is required. For students who have completed their research project before December 2021, the procedure for graduates applies (see below).

### 2. Registration with extra conditions (taking into account the VvE requirement of pre-training with sufficient content concerning disease and health)

- 2.1 Current students who started **as of 2020 or earlier** in the Health Sciences programmes (70 or 120 EC) in the specialisations
  - Biostatistics
  - Medical Psychology
  - Health Economic Analysis
- 2.2 Current students in the Clinical Research programme

These last two groups of students need to follow all of the following instructions to demonstrate their competence, before consulting Prof. A. Burdorf or Prof. M.A. Ikram:

1. find yourself a supervisor who is a skilled epidemiologist (only relevant if you have not finished your research project yet; contact NIHES for advice)
2. pass the NIHES Core competences test (available as of 2022 as part of the Master curriculum, two times per year)

3. attend a minimum of 20 research seminars at the Department of Epidemiology ([secretariat.epi@erasmusmc.nl](mailto:secretariat.epi@erasmusmc.nl)) and/or Department of Public Health ([secretariaat.mgz@erasmusmc.nl](mailto:secretariaat.mgz@erasmusmc.nl)) and register the speaker name, title of the presentation, date and take-home message of each seminar
- 2.3 Graduates from all NIHES programmes who started their programme **as of 2020 or earlier**
1. consult Prof. A. Burdorf or Prof. M.A. Ikram to see if their research project and supervisor qualifies for registration, and if so, follow step 2 and 3 below.
  2. pass the NIHES Core competences test (available as of 2022 as part of the Master curriculum, two times per year; exam fee €75 for participants without registration as Master student, registration via <https://www.nihes.com/application-admission/how-to-apply/> > Courses)
  3. attend a minimum of 20 research seminars at the Department of Epidemiology ([secretariat.epi@erasmusmc.nl](mailto:secretariat.epi@erasmusmc.nl)) and/or Department of Public Health ([secretariaat.mgz@erasmusmc.nl](mailto:secretariaat.mgz@erasmusmc.nl)) and register the speaker name, title of the presentation, date and take-home message of each seminar

### **Registration as Epidemiologist B**

For registration as Epidemiologist B is additionally required:

1. A PhD title in the field of epidemiology
2. Scientific publications in the field of epidemiology
3. Supervision by a registered Epidemiologist B
4. Epidemiologic portfolio

For details and procedure please visit [www.epidemiologie.nl](http://www.epidemiologie.nl)